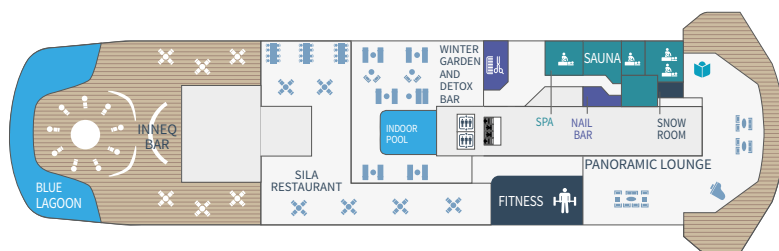


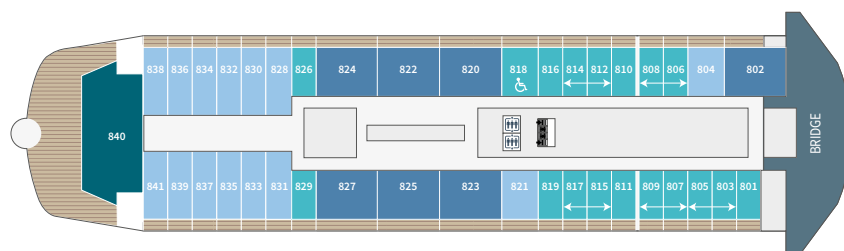
# Deck Plans

From the common areas to the Suites and Staterooms, each deck of the ship is dedicated to comfort. Find detailed *Le Commandant Charcot* deck plans below.

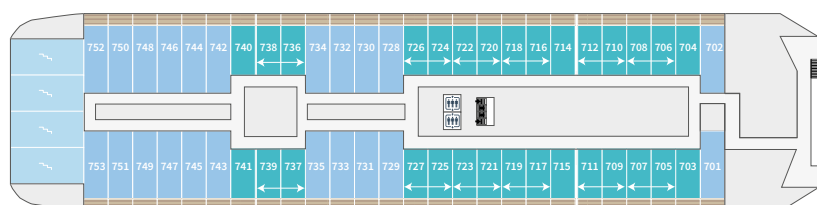
## DECK 9



## DECK 8



## DECK 7



- Owner's Suite
- Duplex Suite
- Privilege Suites Deck 8
- Grand Prestige Suites Deck 6
- ↔ Prestige Suites Decks 7 - 8
- Deluxe Suites Decks 6 - 7 - 8
- Prestige Stateroom Decks 6 - 7 - 8

## DECK 9

Sila Restaurant - Panoramic Bar and Lounge - Fitness - Biologique Recherche SPA (Snow-Room - Massage Rooms - Sauna - Nail Shop - Hairdresser) - Winter Garden - Detox bar - Pools (Inside and Outside) - Inneq Open-air Bar - Library

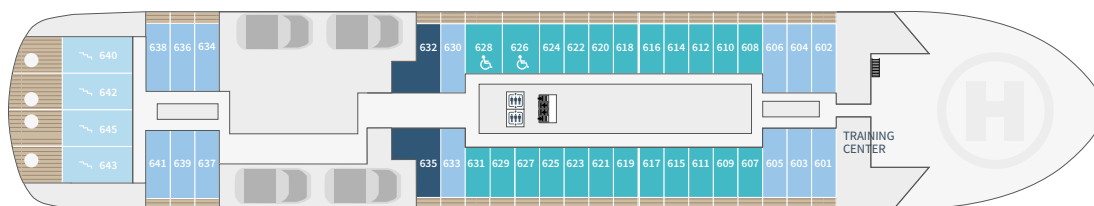
## DECK 8

Owner's Suite - Deluxe Suites - Privilege Suites - Prestige Staterooms (including 1 for person of reduced mobility and Prestige Staterooms convertible into 5 Prestige Suites) - Bridge

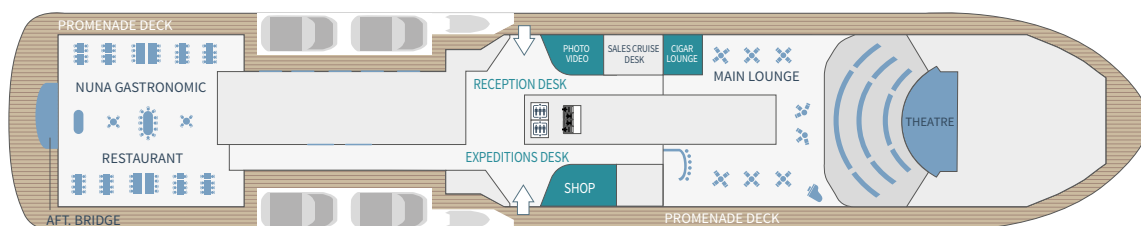
## DECK 7

Deluxe Suites - Prestige Staterooms (including Prestige Staterooms convertible into Prestige Suites)

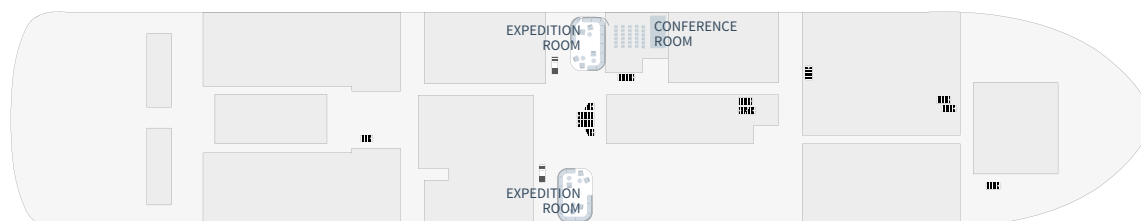
## DECK 6



## DECK 5



## DECK 3



## DECK 6

Duplex Suites - Grand Prestige Suites - Deluxe Suites - Prestige Staterooms (including 2 Prestige Staterooms for person of reduced mobility)

## DECK 5

Nuna Gastronomic Restaurant - Theatre - Main Lounge - Cigar Lounge - Shop - Reception Desk - Expedition Desk - Image & Photo Desk - Cruise sales deck - Promenade deck - AFT. bridge

## DECK 4

Medical centre

## DECK 3

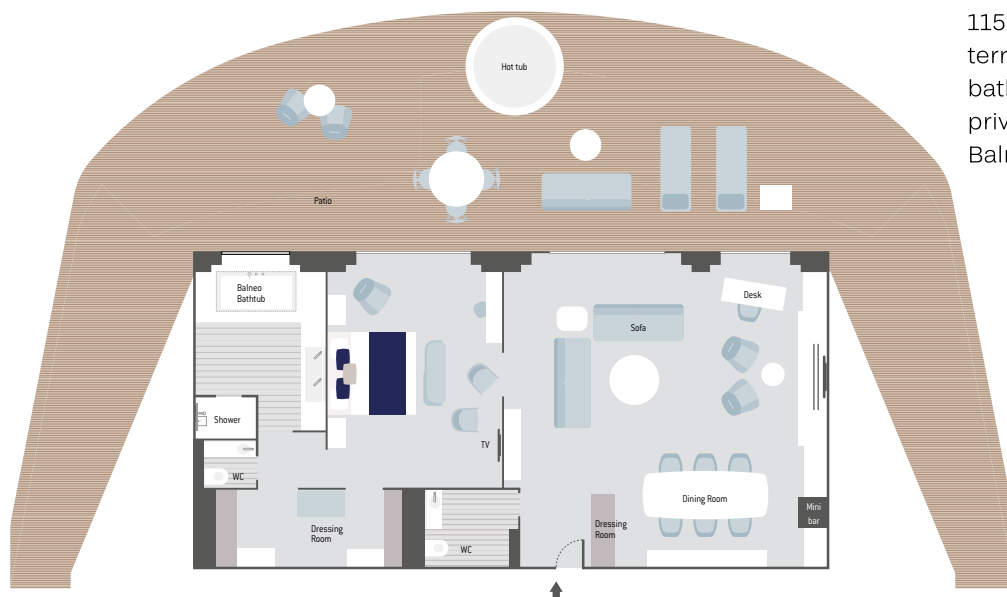
2 dedicated expedition boarding and disembarking rooms to port and starboard. - Conference room

# Discover your Stateroom

In your future cabin, every detail of the decoration is designed for your comfort and pleasure.

## ● Owner's Suite

115 sq.m. +186 sq.m. private terrace with hot tub - Balneo bathtub / 1 237 sq.ft. + 2 002 sq.ft. private terrace with hot tub - Balneo bathtub



## ● Duplex Suites

94 sq.m. + 26 sq.m. private terrace with hot tub - Balneo bathtub / 1 011 sq.ft. + 279 sq.ft. private terrace with hot tub - Balneo bathtub



## ● Privilege Suites

48 sq.m. + 12.5 sq.m. private balcony - Balneo bathtub / 516 sq.ft. + 134.5 sq.ft. private balcony - Balneo bathtub

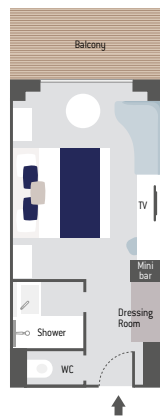
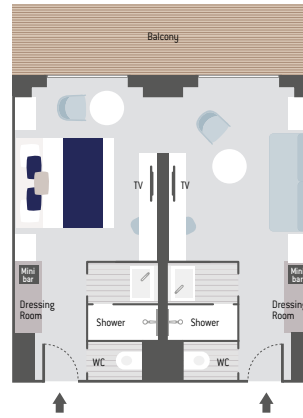
### Grand Prestige Suites ●

42 sq.m. + 5 sq.m. private balcony / 452 sq.ft. + 54 sq.ft. private balcony



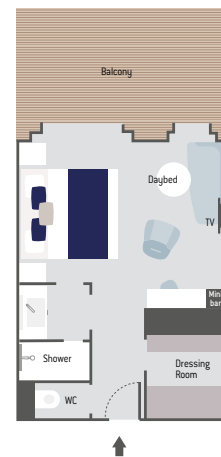
### ↔ Prestige Suites

40 sq.m. + 10 sq.m. private balcony / 430 sq.ft. + 107 sq.ft. private balcony



### Prestige Stateroom ●

20 sq.m. + 5 sq.m. private balcony / 215 sq.ft. + 53 sq.ft. private balcony



### ● Deluxe Suites

28 sq.m. + 5 sq.m. private balcony / 301 sq.ft. + 53 sq.ft. private balcony

### AMENITIES

- Private balcony for all our Cabins and Suites
- Terrace for the Duplex Suites and the Owner's Suite
- Butler service: Owner's Suite, Duplex Suites, Privilege Suites and Grand Prestige Suites
- Individually-controlled airconditioning
- Stateroom layout: king-size bed, or twin beds, communicating staterooms available
- Minibar - 24hr room service
- Satellite TV channels (availability dependent on navigation); selection of videos on demand
- Bose™ Bluetooth speaker
- Safe
- Selection of Dyptique Paris top-of-the-line bath products
- Dressing table, bath robes, Hairdryer
- Direct line telephone
- 110V American (two flat pins)/220V European (round sockets with two round pins)
- Internet access Wifi